

# M2 Upgrade



## Night work fact sheet March 2011

The M2 Motorway is an important part of the Sydney Orbital Network. This means that the motorway must still operate while construction of the upgrade is underway. The need to maintain traffic flow and ensure the safety of road users and construction workers means that some work must be undertaken after 8pm when traffic volumes are low and lanes can be safely closed. This will occur over the two year construction program.

The M2 Upgrade project is committed to managing the impacts of construction noise for the local community whilst also minimising traffic interruptions.

### Managing noise

The M2 Upgrade will manage noise in accordance with the requirements of the Environment Protection Licence, granted by the Department of Environment, Climate Change and Water, the Minister for Planning's Conditions of Approval and the M2 Upgrade Statement of Commitments. Links to these documents are available on the project website: [www.hillsm2upgrade.com.au](http://www.hillsm2upgrade.com.au)

We will ensure every effort is made to minimise the impacts of construction noise on the local community. We will use a range of noise management tools and communication activities to help minimise the impacts of construction noise.

### Noise management tools:

**Communications activities** include face-to-face visits with residents and businesses most affected, targeted letterbox deliveries, information on the website and 24 hour phone line.

**Programming** noisy works during the early part of the evening whenever possible.

**Control** measures such as noise barriers, shrouding of equipment, selection of the quietest machinery and methodology, regularly checking machinery for noise levels and monitoring of noise levels.

Non-tonal reversing alarms that make a "quacking" rather than a "beeping" sound are used on the project.

Noise reducing curtains will be installed at both ends of the Norfolk Tunnel to reduce construction noise impacts on the surrounding residences. These curtains will be open during the day and closed at night when work is being carried out.

**Modifying construction activities** such as providing respite periods, scheduling and managing equipment efficiently.

**Temporary accommodation and respite activities** for residents who could be impacted by night-time noise exceedances in accordance with the Out of Hours Work Protocol, which is part of the Construction Noise and Vibration Management sub plan (attachment C) and is available on the project website.

Temporary accommodation will be offered to some residents who are likely to be the most affected by noisy work. If short term temporary accommodation is identified, the community relations team will discuss options with these residents. The venue will be paid directly, not the resident.

Respite offers such as movie tickets will be offered to some other, less affected, residents. This will be determined on a case by case basis.

#### M2Upgrade project

A team consisting of The Roads and Traffic Authority of NSW, The Hills Motorway Limited and Hills Motorway Management Limited (as trustee of the Hills Motorway Trust)

**Go to:** [www.hillsm2upgrade.com.au](http://www.hillsm2upgrade.com.au)

**Live traffic:** <http://livetraffic.rta.nsw.gov.au/>

**Email:** [enquiries@hillsm2upgrade.com.au](mailto:enquiries@hillsm2upgrade.com.au)

**Call:** 1800 196 266 (free call)

**Post:** Locked Bag 2215, North Ryde BC NSW 1670



A number of factors will be considered in offering temporary relocation and respite options. These include the level and duration of noise experienced by residents and individual personal circumstances such as health issues, work and study requirements and examination periods.

**Appointment of an independent community noise facilitator** will ensure that noise complaints are responded to effectively. This facilitator will negotiate outcomes for the local community in the context of the timely delivery of the project. An issues assessment report will be prepared and provided to the project team and to the concerned resident. See the flow chart on the next page.

**Norfolk Tunnel** The project will individually meet with residents living adjacent to the Norfolk Tunnel to provide information about what to expect during construction and to discuss the best way of keeping them informed. Home plan survey will also be undertaken so consultation and mitigation measures can be tailored to needs of individual properties.

We are subject to the Privacy and Personal Information Protection Act 1998 ("PIIP Act") which requires that we comply with the Information Privacy Principles set out in the PIIP Act. Further information about the PIIP Act is available on the NSW Privacy Commission website:

[http://www.lawlink.nsw.gov.au/lawlink/privacynsw/ll\\_pnsw.nsf/pages/pnsw\\_03\\_ppipact](http://www.lawlink.nsw.gov.au/lawlink/privacynsw/ll_pnsw.nsf/pages/pnsw_03_ppipact).

---

## M2Upgrade project

A team consisting of The Roads and Traffic Authority of NSW, The Hills Motorway Limited and Hills Motorway Management Limited (as trustee of the Hills Motorway Trust)

**Go to:** [www.hillsm2upgrade.com.au](http://www.hillsm2upgrade.com.au)

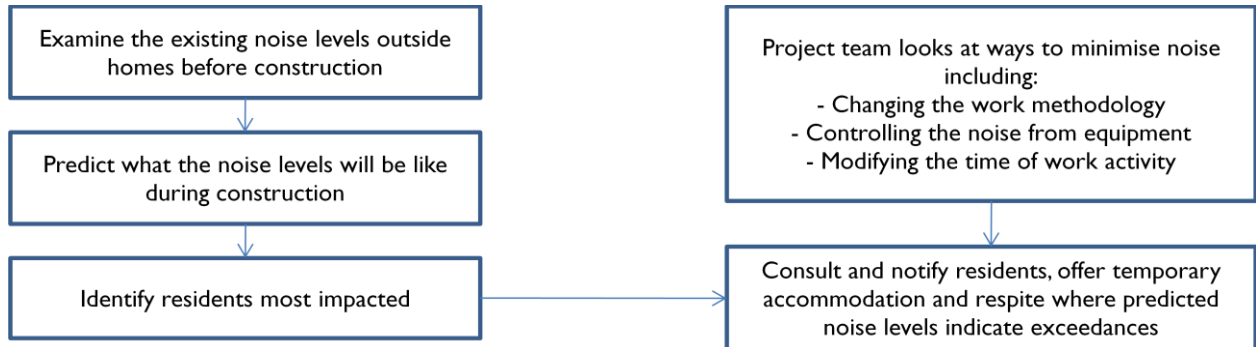
**Live traffic:** <http://livetraffic.rta.nsw.gov.au/>

**Email:** [enquiries@hillsm2upgrade.com.au](mailto:enquiries@hillsm2upgrade.com.au)

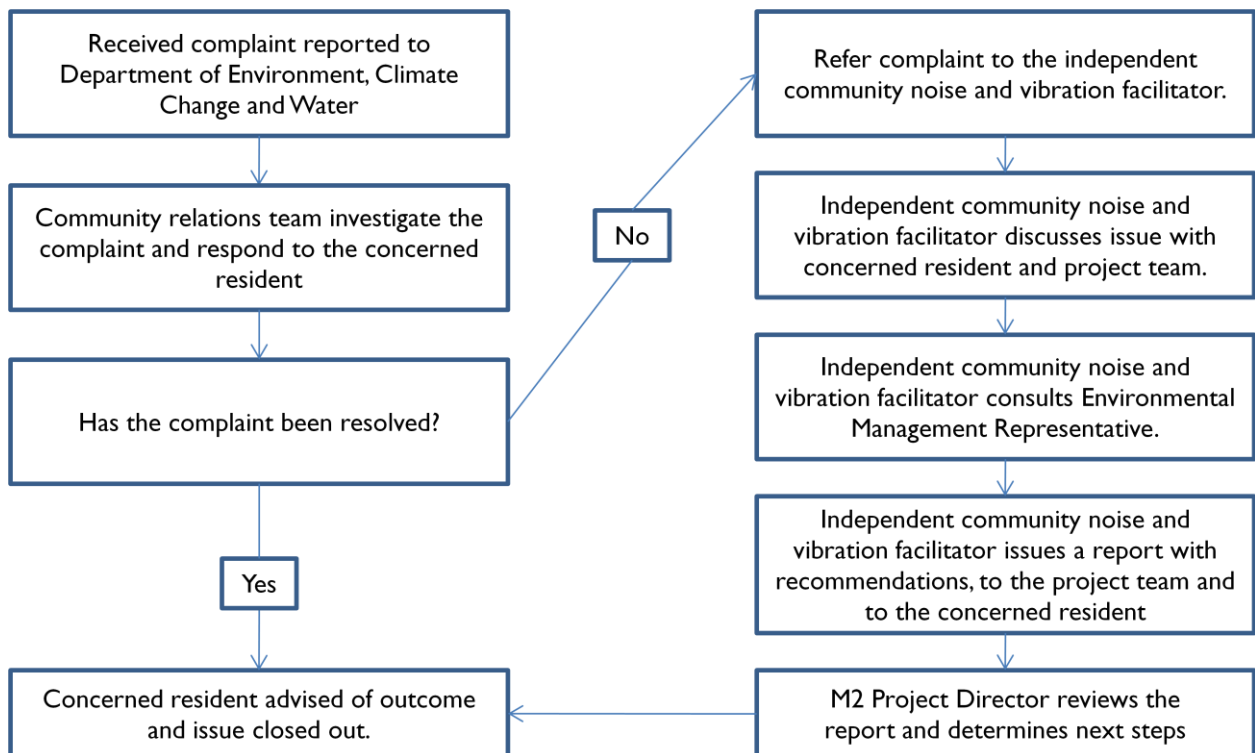
**Call:** 1800 196 266 (free call)

**Post:** Locked Bag 2215, North Ryde BC NSW 1670

## Managing construction noise



## Responding to noise complaints from residents



### M2Upgrade project

A team consisting of The Roads and Traffic Authority of NSW, The Hills Motorway Limited and Hills Motorway Management Limited (as trustee of the Hills Motorway Trust)

**Go to:** [www.hillsm2upgrade.com.au](http://www.hillsm2upgrade.com.au)  
**Live traffic:** <http://livetraffic.rta.nsw.gov.au/>  
**Email:** [enquiries@hillsm2upgrade.com.au](mailto:enquiries@hillsm2upgrade.com.au)  
**Call:** 1800 196 266 (free call)  
**Post:** Locked Bag 2215, North Ryde BC NSW 1670