

10 January 2012

Our Reference: N0288

Dear resident,

Please note additional dates

Re: Night work to saw cut the new road pavement near Busaco Road, Marsfield continuing from 17 January 2012

Significant progress has been made on the Hills M2 Upgrade since work started in January 2011. The project will reduce congestion and travel times during the busy morning and afternoon periods and improve access to the motorway. The upgrade is scheduled for completion in the first half of 2013.

As part of the widening works, saw cutting of the new road pavement will be undertaken on the eastbound carriageway of the motorway near Busaco Road, Marsfield.

The new road pavement must be saw cut within 4 to 8 hours of concrete being poured, depending on the weather. The concrete will be poured during the day and the saw cutting will occur at night.

This work will be undertaken between 6pm and 5am on the dates shown over the page. Because this work is noisy, saw cutting will not be scheduled for more than two nights per week to reduce noise impacts on nearby residents.

Work activities

Machinery and equipment needed for the work includes concrete saws, a light tower, work vehicles, air blowers and an industrial vacuum. You may experience increased noise levels as a result of the work. The project team will take measures to keep this to a minimum, including using non-tonal reversing alarms, which make a "quacking" sound instead of a "beeping" sound.

For more information about how the project team will manage noise, please refer to the *Hills M2 Upgrade Noise Management Fact Sheet* which is available on the project website www.hillsm2upgrade.com.au.

The community complaints and information line 1800 196 266 (select option 2) will be attended 24 hours per day, 7 days per week during construction. Complaints will be responded to within two hours and investigation of the complaint will proceed at the earliest opportunity.

If you have any questions or would like to provide feedback please contact the project team on the 1800 number or email enquiries@hillsm2upgrade.com.au.

Regards



Sanjin Muhic
Hills M2 Upgrade Community Relations Manager



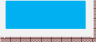
**Hills M2 Upgrade
breakdown safety**

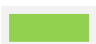
In the case of breakdown:

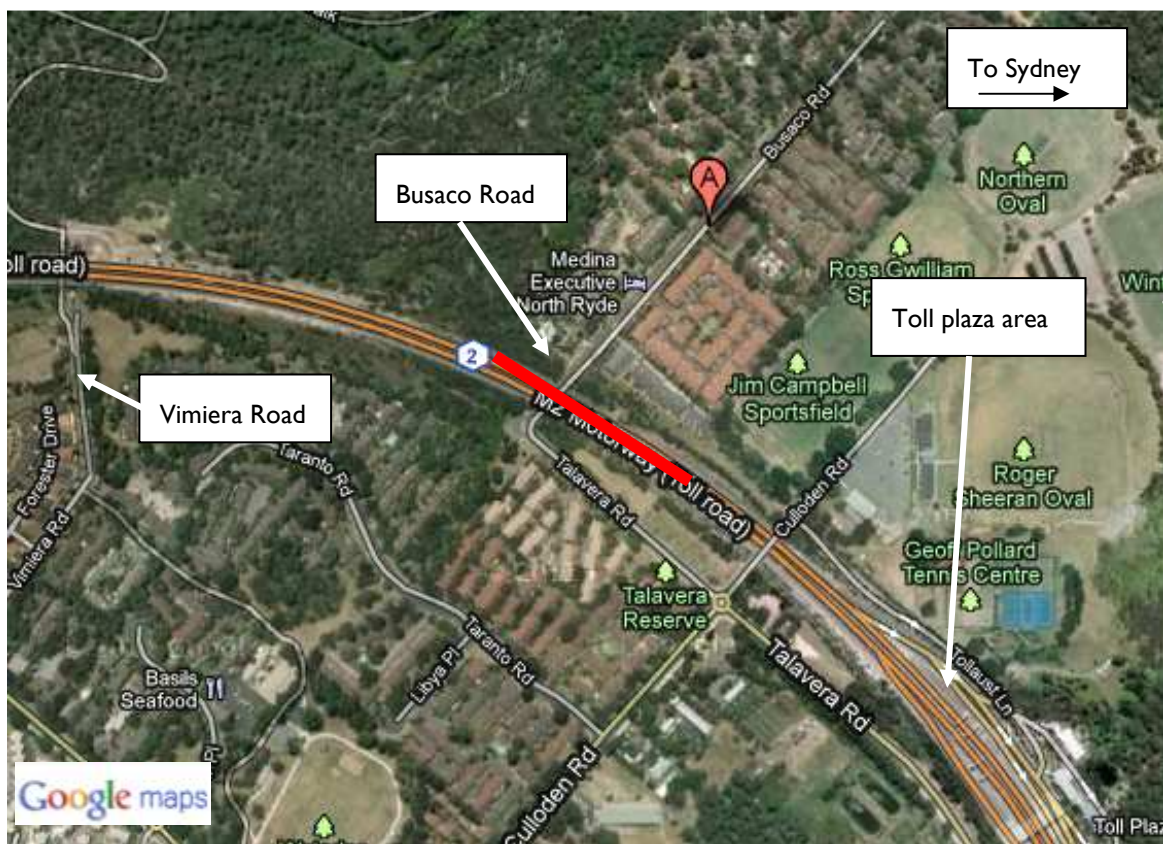
- Stay in your vehicle
- Switch on your hazard lights
- Call **1800 196 266**
- Wait for assistance

Dates of night work: January 2012

January 2012						
S	M	T	W	T	F	S
1	2	3	4	5	6	7
8	9	10	11	12	13	14
15	16	17	18	19	20	21
22	23	24	25	26	27	28
29	30	31				

Dates and location of night work 

Contingency dates 



If you need an interpreter, please call the Translating and Interpreting Service (TIS National) on **131 450** and ask them to telephone the M2 Upgrade project information line on 1800 196 266. Our business hours are 8.30am to 5.00pm Monday to Friday.

Cantonese

若你需要口譯員，請致電**131 450**聯絡翻譯和口譯服務署 (TIS National)，要求他們致電 1800 196 266 聯絡 M2 Upgrade project information line。我們的工作時間是 8.30am to 5.00pm Monday to Friday。

Mandarin

如果你需要口译员，请致电**131 450**联系翻译和口译服务署 (TIS National)，要求他们致电1800 196 266 联系 M2 Upgrade project information line。我们的工作时间是 8.30am to 5.00pm Monday to Friday。

Korean

통역사가 필요하시면 번역통역서비스 (TIS National)에 131 450으로 연락하여 이들에게 1800 196 266 번으로 M2 Upgrade project information line에 전화하도록 요청하십시오. 저희의 근무시간은 8.30am to 5.00pm Monday to Friday 입니다.



Hills M2 Upgrade

A team consisting of Roads and Maritime Services, The Hills Motorway Limited and Hills Motorway Management Limited (as trustee of the Hills Motorway Trust)

Go to: www.hillsm2upgrade.com.au

Live traffic: www.livetraffic.com

Email: enquiries@hillsm2upgrade.com.au

Call: 1800 196 266 (select option 2)

Post: PO Box 379, North Ryde BC NSW 1670