

25 January 2012

Our Reference: N0314

Dear resident,

PLEASE NOTE NIGHT WORK DATE CHANGES

Re: Night work to strengthen the motorway road pavement between Norfolk Tunnel and Terrys Creek Bridge, Epping commencing 2 February

Significant progress has been made on the Hills M2 Upgrade since major work started in January 2011. The project will reduce congestion and travel times during the busy morning and afternoon periods and improve access to the motorway. The upgrade will be completed in the first half of 2013.

As part of the upgrade, a process known as “cross stitching” will be undertaken to strengthen the existing road pavement on both carriageways between Norfolk Tunnel and Terrys Creek Bridge, Epping. This will involve drilling holes into the surface of the concrete pavement and then placing grout and steel bars into the drilled holes.

This activity will be carried out two nights per week at each location from Thursday, 2 February to Friday, 30 March 2012. The work dates are shown over the page. This work will be undertaken between 8pm and 5am when traffic volumes on the motorway are lower. During this work traffic will be diverted to the alternate carriageway under a contra flow arrangement.

Machinery and equipment used will include light vehicles, hammer drills, generators, industrial vacuum cleaners, lighting towers and hand tools. You may experience increased noise levels as a result of the work. The project team will take measures to keep this to a minimum, including:

- Completing drilling work by midnight
- Using non-tonal reversing alarms, which make a “quacking” sound instead of a “beeping” sound
- Shrouding stationary equipment and using hoarding where possible.

For more information about how we will manage noise, please refer to the *Hills M2 Upgrade Noise Management Fact Sheet* which is available on the project website www.hillsm2upgrade.com.au.

The community complaints and information line 1800 196 266 (select option 2) will be attended 24 hours per day, 7 days per week during construction. Complaints will be responded to within two hours and investigation of the complaint will proceed at the earliest opportunity.

If you have any questions or would like to provide feedback please contact the project team on the 1800 number or email enquiries@hillsm2upgrade.com.au.

Regards



Sanjin Muhic
Hills M2 Upgrade Community Relations Manager



**Hills M2 Upgrade
breakdown safety**

In the case of breakdown:

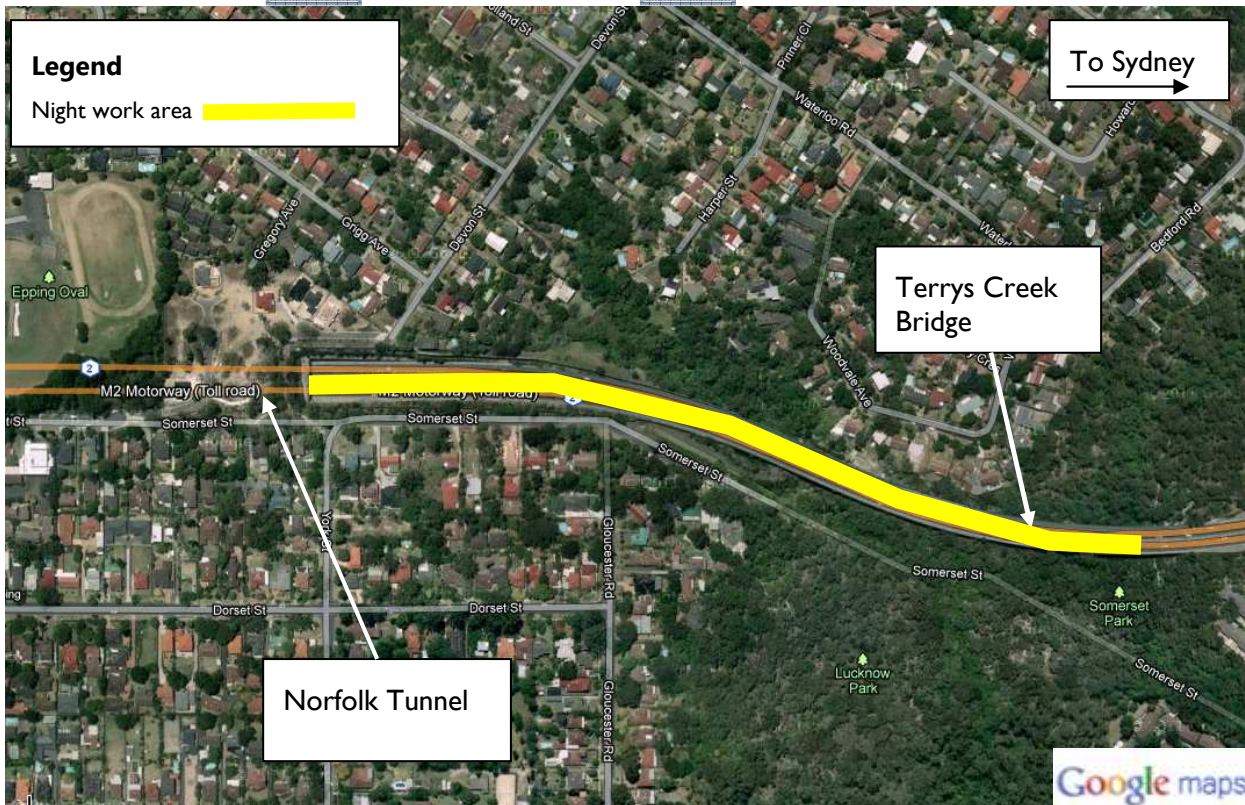
- Stay in your vehicle
- Switch on your hazard lights
- Call **1800 196 266**
- Wait for assistance

Hills M2 Upgrade



February																						
1	2	3	4	5	6	7	8	9	10	11	12	13	14	15	16	17	18	19	20	21	22	23
	Blue	Blue			Green	Green		Blue	Blue			Green	Green		Blue	Blue			Green	Green		Blue
24	25	26	27	28	29	30	31															
Blue			Green	Green																		
March																						
1	2	3	4	5	6	7	8	9	10	11	12	13	14	15	16	17	18	19	20	21	22	23
Blue	Blue			Green	Green		Blue	Blue			Green	Green		Blue	Blue			Green	Green		Blue	Blue
24	25	26	27	28	29	30	31															
		Green	Green		Blue	Blue																

Dates of night work Contingency dates



Hills M2 Upgrade

A team consisting of The Roads and Maritime Services, The Hills Motorway Limited and Hills Motorway Management Limited (as trustee of the Hills Motorway Trust)

Go to: www.hillsm2upgrade.com.au

Live traffic: www.livetraffic.com

Email: enquiries@hillsm2upgrade.com.au

Call: 1800 196 266 (select option 2)

Post: PO Box 379, North Ryde BC NSW 1670

Hills M2 Upgrade



If you need an interpreter, please call the Translating and Interpreting Service (TIS National) on **131 450** and ask them to telephone the M2 Upgrade project information line on 1800 196 266. Our business hours are 8.30am to 5.00pm Monday to Friday.

Cantonese

若你需要口譯員，請致電**131 450**聯絡翻譯和口譯服務署 (TIS National)，要求他們致電 1800 196 266 聯絡 M2 Upgrade project information line。我們的工作時間是 8.30am to 5.00pm Monday to Friday。

Mandarin

如果你需要口译员，请致电**131 450**联系翻译和口译服务署 (TIS National)，要求他们致电1800 196 266 联系 M2 Upgrade project information line。我们的工作时间是 8.30am to 5.00pm Monday to Friday。

Korean

통역사가 필요하시면 번역통역서비스 (TIS National)에 131 450으로 연락하여 이들에게 1800 196 266 번으로 M2 Upgrade project information line에 전화하도록 요청하십시오. 저희의 근무시간은 8.30am to 5.00pm Monday to Friday 입니다.



Hills M2 Upgrade

A team consisting of Roads and Maritime Services, The Hills Motorway Limited and Hills Motorway Management Limited (as trustee of the Hills Motorway Trust)

Go to: www.hillsm2upgrade.com.au

Live traffic: www.livetraffic.com

Email: enquiries@hillsm2upgrade.com.au

Call: 1800 196 266 (select option 2)

Post: PO Box 379, North Ryde BC NSW 1670