

23 January 2012

Our Reference: N0261

Dear resident,

## PLEASE NOTE DATE CHANGES

### **Re: Night work on the M2 Motorway from Yale Close to Barclay Road, North Rocks commencing 30 January**

Significant progress has been made on the Hills M2 Upgrade since work started in January 2011. The upgrade is scheduled for completion in the first half of 2013. The project will deliver significant benefits to the community including reduced congestion, faster travel times and improved access to the motorway.

As part of the pavement widening, a process known as “cross stitching” will be undertaken to strengthen the existing road pavement on the eastbound carriageway of the motorway between Yale Close and Barclay Road. This will involve drilling into the surface of the concrete pavement and placing grout and reinforced steel bars into the drilled holes.

The work will start near Yale Close and move west along the motorway. The work will be undertaken over two consecutive nights each week and take 6 weeks to complete, weather permitting. Please refer to the table over the page for the dates this work is scheduled.

Machinery and equipment used will include light vehicles, hammer drills, generators, industrial vacuum cleaner, lighting towers and hand tools. You may experience increased noise levels as a result of the work. The project team will take measures to keep this to a minimum, including:

- Using non-tonal reversing alarms, which make a “quacking” sound instead of a “beeping” sound.
- Completing drilling by midnight.

For more information about how we will manage noise, please refer to the M2 Upgrade Noise Management Fact Sheet which is available on the project website [www.hillsm2upgrade.com.au](http://www.hillsm2upgrade.com.au).

#### Traffic Changes

The work will be undertaken at night between 8pm and 5am when traffic volumes on the motorway are lower. The westbound carriageway will be closed during this work and traffic will be diverted to the eastbound carriageway under a contra flow arrangement. There will be speed reductions in place during the work.

**The community complaints and information line 1800 196 266 (select option 2)** will be attended 24 hours per day, 7 days per week during construction. Complaints will be responded to within two hours and investigation of the complaint will proceed at the earliest opportunity.

If you have any questions or would like to provide feedback please contact the project team on the 1800 number or email [enquiries@hillsm2upgrade.com.au](mailto:enquiries@hillsm2upgrade.com.au).

Regards



Sanjin Muhic  
Hills M2 Upgrade Community Relations Manager



## Hills M2 Upgrade breakdown safety

In the case of breakdown:

- Stay in your vehicle
- Switch on your hazard lights
- Call **1800 196 266**
- Wait for assistance

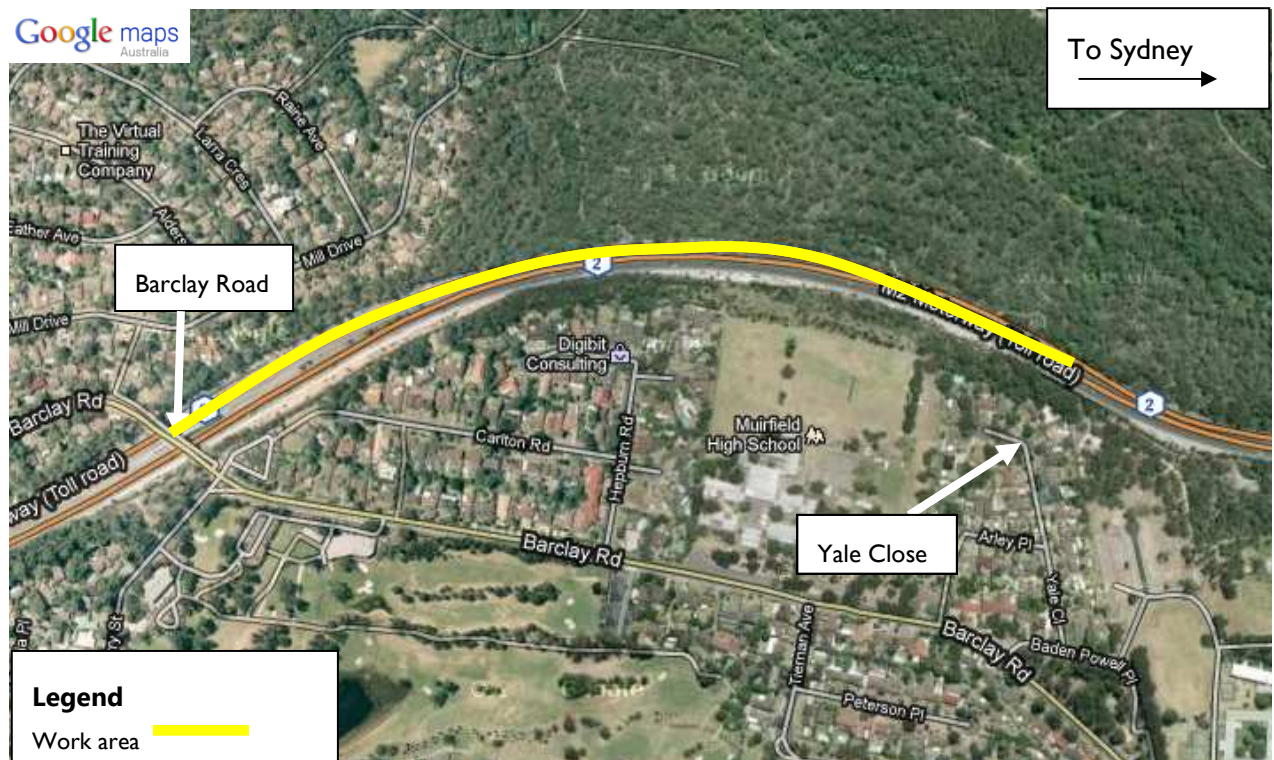
## February 2012

February 2012						
S	M	T	W	T	F	S
	30	31	1	2	3	4
5	6	7	8	9	10	11
12	13	14	15	16	17	18
19	20	21	22	23	24	25
26	27	28	29	1		

Barclay Road to Yale Close (moving east)



Contingency dates



### Hills M2 Upgrade

A team consisting of Roads and Maritime Services, The Hills Motorway Limited and Hills Motorway Management Limited (as trustee of the Hills Motorway Trust)

**Go to:** [www.hillsm2upgrade.com.au](http://www.hillsm2upgrade.com.au)

**Live traffic:** [www.livetraffic.com](http://www.livetraffic.com)

**Email:** [enquiries@hillsm2upgrade.com.au](mailto:enquiries@hillsm2upgrade.com.au)

**Call:** 1800 196 266 (select option 2)

**Post:** PO Box 379, North Ryde BC NSW 1670

If you need an interpreter, please call the Translating and Interpreting Service (TIS National) on **131 450** and ask them to telephone the M2 Upgrade project information line on 1800 196 266. Our business hours are 8.30am to 5.00pm Monday to Friday.

#### Cantonese

若你需要口譯員，請致電**131 450**聯絡翻譯和口譯服務署 (TIS National)，要求他們致電 1800 196 266 聯絡 M2 Upgrade project information line。我們的工作時間是 8.30am to 5.00pm Monday to Friday。

#### Mandarin

如果你需要口译员，请致电**131 450**联系翻译和口译服务署 (TIS National)，要求他们致电1800 196 266 联系 M2 Upgrade project information line。我们的工作时间是 8.30am to 5.00pm Monday to Friday。

#### Korean

통역사가 필요하시면 번역통역서비스 (TIS National)에 131 450으로 연락하여 이들에게 1800 196 266 번으로 M2 Upgrade project information line에 전화하도록 요청하십시오. 저희의 근무시간은 8.30am to 5.00pm Monday to Friday 입니다.



---

#### Hills M2 Upgrade

A team consisting of Roads and Maritime Services, The Hills Motorway Limited and Hills Motorway Management Limited (as trustee of the Hills Motorway Trust)

**Go to:** [www.hillsm2upgrade.com.au](http://www.hillsm2upgrade.com.au)

**Live traffic:** [www.livetraffic.com](http://www.livetraffic.com)

**Email:** [enquiries@hillsm2upgrade.com.au](mailto:enquiries@hillsm2upgrade.com.au)

**Call:** 1800 196 266 (select option 2)

**Post:** PO Box 379, North Ryde BC NSW 1670

---