

14 December 2011

Our Reference: N0259

Dear resident,

Re: Night work to pour the new deck at Terrys Creek Bridge, North Epping on 21 December 2011 and 6 January 2012

Significant progress has been made on the Hills M2 Upgrade since work started in January 2011. The project will reduce congestion and travel times during the busy morning and afternoon periods and improve access to the motorway. The upgrade is scheduled for completion in the first half of 2013.

As part of the widening of Terrys Creek Bridge, the new concrete deck along the eastbound carriageway of the motorway will be poured on 21 December 2011 and 6 January 2012. This work will be undertaken at night from 8pm to 5am when traffic volumes are lower.

Please refer to the table and map attached for further details.

Work Activities

Machinery and equipment used will include concrete pumps and trucks, vibrators, hammers, saws, light vehicles, lighting towers, hand tools and small generators. You may experience increased noise levels as a result of the work. The project team will take measures to keep this to a minimum, including:

- Completing hammering and saw cutting by midnight.
- Using non-tonal reversing alarms, which make a “quacking” sound instead of a “beeping” sound.
- Shrouding all stationary equipment and using hoarding where possible.

For more information about how we will manage noise, please refer to the *Hills M2 Upgrade Noise Management Fact Sheet* which is available on the project website www.hillsm2upgrade.com.au.

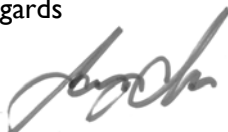
Traffic Arrangements

During this work citybound traffic will be diverted onto the westbound carriageway under contra-flow arrangement. Speed limits will be reduced to 40 kph in the contra-flow area.

The community complaints and information line 1800 196 266 (select option 2) will be attended 24 hours per day, 7 days per week during construction. Complaints will be responded to within two hours and investigation of the complaint will proceed at the earliest opportunity.

If you have any questions or would like to provide feedback please contact the project team on the 1800 number or email enquiries@hillsm2upgrade.com.au.

Regards



Sanjin Muhic
Hills M2 Upgrade Community Relations Manager



Hills M2 Upgrade
breakdown safety

In the case of breakdown:

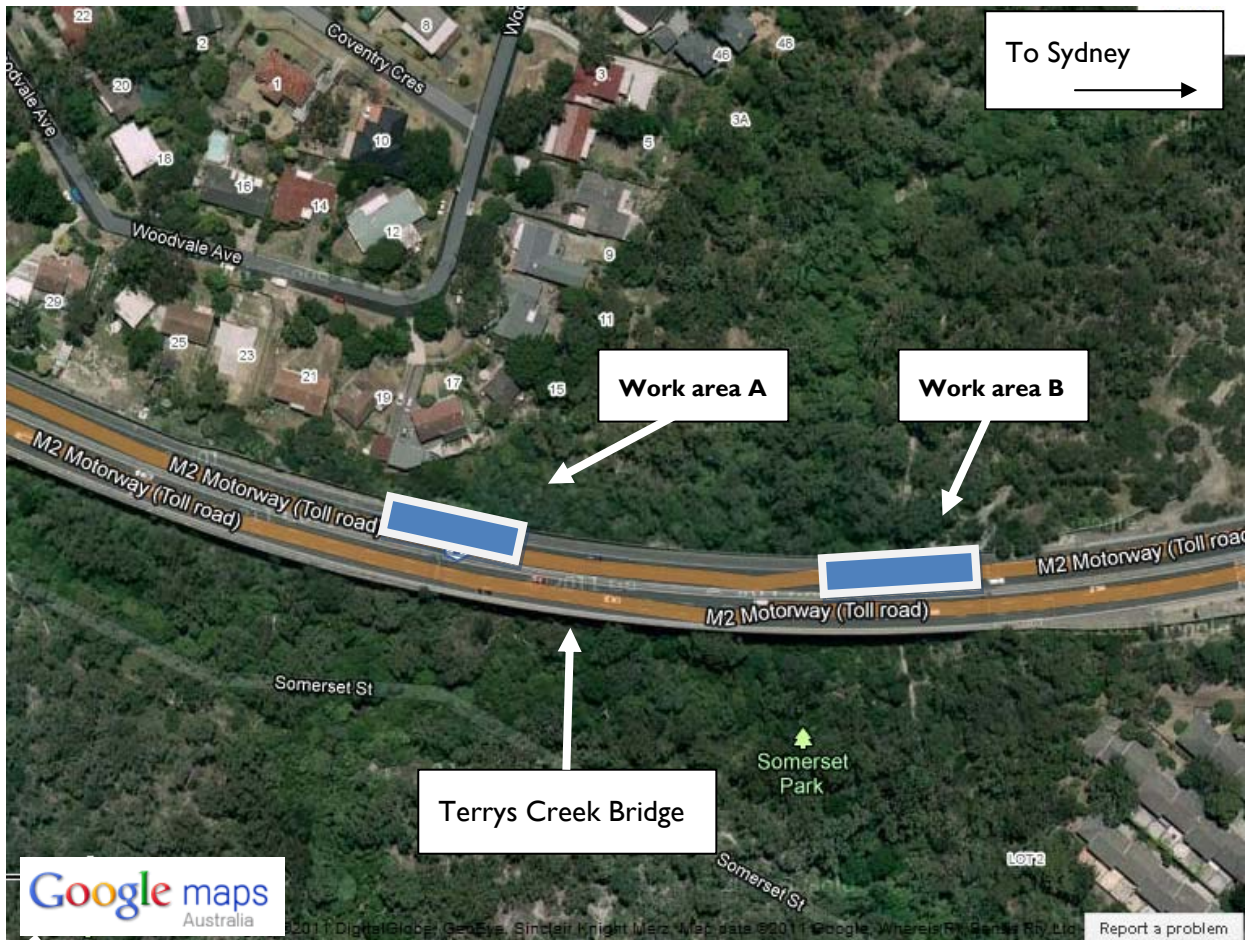
- Stay in your vehicle
- Switch on your hazard lights
- Call **1800 196 266**
- Wait for assistance

Dates of night work

Contingency dates

A. December 2011						
S	M	T	W	T	F	S
18	19	20	21	22	23	24
25	26	27	28	29	30	31

B. January 2012						
S	M	T	W	T	F	S
1	2	3	4	5	6	7
8	9	10	11	12	13	14



Hills M2 Upgrade



If you need an interpreter, please call the Translating and Interpreting Service (TIS National) on **131 450** and ask them to telephone the M2 Upgrade project information line on 1800 196 266. Our business hours are 8.30am to 5.00pm Monday to Friday.

Cantonese

若你需要口譯員，請致電**131 450**聯絡翻譯和口譯服務署 (TIS National)，要求他們致電 1800 196 266 聯絡 M2 Upgrade project information line。我們的工作時間是 8.30am to 5.00pm Monday to Friday。

Mandarin

如果你需要口译员，请致电**131 450**联系翻译和口译服务署 (TIS National)，要求他们致电1800 196 266 联系 M2 Upgrade project information line。我们的工作时间是 8.30am to 5.00pm Monday to Friday。

Korean

통역사가 필요하시면 번역통역서비스 (TIS National)에 131 450으로 연락하여 이들에게 1800 196 266 번으로 M2 Upgrade project information line에 전화하도록 요청하십시오. 저희의 근무시간은 8.30am to 5.00pm Monday to Friday 입니다.



Hills M2 Upgrade

A team consisting of Roads and Maritime Services, The Hills Motorway Limited and Hills Motorway Management Limited (as trustee of the Hills Motorway Trust)

Go to: www.hillsm2upgrade.com.au

Live traffic: www.livetraffic.com

Email: enquiries@hillsm2upgrade.com.au

Call: 1800 196 266 (select option 2)

Post: PO Box 379, North Ryde BC NSW 1670