

30 January 2012

Our reference: N0304

Dear resident,

Re: Steel reinforcement installation underneath Beecroft Road Bridge on the Hills M2 Motorway central median, starting 6 February

Significant progress has been made on the Hills M2 Upgrade since work started in January 2011. The project will reduce congestion and travel times during the busy morning and afternoon periods and improve access to the motorway. The upgrade will be completed in the first half of 2013.

As part of the Beecroft Road Bridge modification work, steel reinforcement will be lifted onto scaffold and installed on the bridge piers underneath the bridge. This work will be undertaken at night between **8pm and 5am**, when traffic volumes on the motorway are lower. Please refer to the dates and work area shown over the page.

Work activities

Machinery and equipment required for this work includes lighting towers, trucks, two cranes and hand tools. You may experience increased noise levels as a result of this work. We will take measures to keep this to a minimum, including using non-tonal reversing alarms, which make a “quacking” sound instead of a “beeping” sound.

For more information about how the project team will manage noise, please refer to the *Hills M2 Upgrade Noise Management Fact Sheet* which is available on the project website www.hillsm2upgrade.com.au.

Traffic arrangements

During this work traffic will be diverted to the opposite carriageway and a contra flow traffic arrangement will be in place. Speed limits will be reduced to 40 kph in the contra-flow area. Please drive carefully and follow the signs.

The community complaints and information line 1800 196 266 (select option 2) will be attended 24 hours per day, 7 days per week during construction. Complaints will be responded to within two hours and investigation of the complaint will proceed at the earliest opportunity. If you have any questions or would like to provide feedback please contact the project team on the 1800 number or email enquiries@hillsm2upgrade.com.au.

Kind regards,



Sanjin Muhic

Hills M2 Upgrade Community Relations Manager



**Hills M2 Upgrade
breakdown safety**

In the case of breakdown:

- Stay in your vehicle
- Switch on your hazard lights
- Call **1800 196 266**
- Wait for assistance

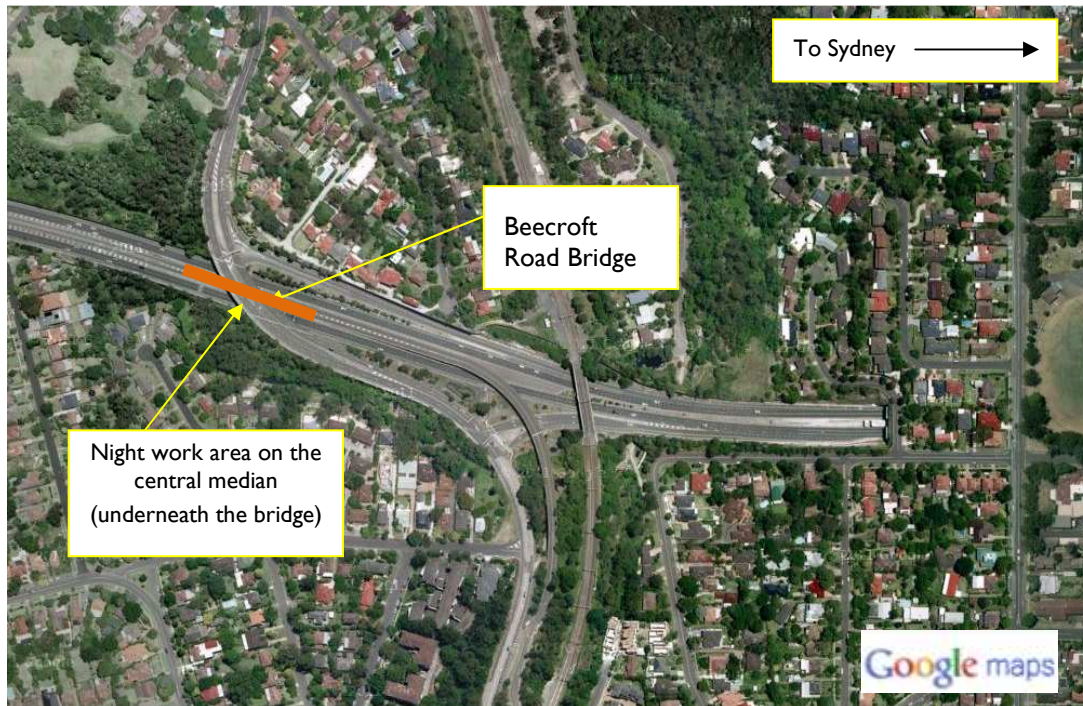
Dates of night work: February 2012

Date	Mon 6	Tue 7	Wed 8	Thu 9	Fri 10	Sat 11	Sun 12
Work							
Date	Mon 13	Tue 14	Wed 15	Thu 16	Fri 17	Sat 18	Sun 19
Work							

Dates of night work



Contingency dates



Hills M2 Upgrade

A team consisting of Roads and Maritime Services, The Hills Motorway Limited and Hills Motorway Management Limited (as trustee of the Hills Motorway Trust)

Go to: www.hillsm2upgrade.com.au

Live traffic: www.livetraffic.com

Email: enquiries@hillsm2upgrade.com.au

Call: 1800 196 266 (select option 2)

Post: PO Box 379, North Ryde BC NSW 1670

Hills M2 Upgrade



If you need an interpreter, please call the Translating and Interpreting Service (TIS National) on **131 450** and ask them to telephone the M2 Upgrade project information line on 1800 196 266. Our business hours are 8.30am to 5.00pm Monday to Friday.

Cantonese

若你需要口譯員，請致電**131 450**聯絡翻譯和口譯服務署 (TIS National)，要求他們致電 1800 196 266 聯絡 M2 Upgrade project information line。我們的工作時間是 8.30am to 5.00pm Monday to Friday。

Mandarin

如果你需要口译员，请致电**131 450**联系翻译和口译服务署 (TIS National)，要求他们致电1800 196 266 联系 M2 Upgrade project information line。我们的工作时间是 8.30am to 5.00pm Monday to Friday。

Korean

통역사가 필요하시면 번역통역서비스 (TIS National)에 131 450으로 연락하여 이들에게 1800 196 266 번으로 M2 Upgrade project information line에 전화하도록 요청하십시오. 저희의 근무시간은 8.30am to 5.00pm Monday to Friday 입니다.



Hills M2 Upgrade

A team consisting of Roads and Maritime Services, The Hills Motorway Limited and Hills Motorway Management Limited (as trustee of the Hills Motorway Trust)

Go to: www.hillsm2upgrade.com.au

Live traffic: www.livetraffic.com

Email: enquiries@hillsm2upgrade.com.au

Call: 1800 196 266 (select option 2)

Post: PO Box 379, North Ryde BC NSW 1670
