

16 January 2012

Our reference: N0076

Dear resident,

**Re: Night work to relocate a sign on the motorway near Khartoum Road, Marsfield commencing 23 January 2012**

Significant progress has been made on the Hills M2 Upgrade since work started in January 2011. The project will reduce congestion and travel times during the busy morning and afternoon periods and improve access to the motorway. The upgrade is scheduled for completion in the first half of 2013.

To enable widening of the motorway an existing sign on the westbound carriageway near Khartoum Road will be relocated. Due to the volume of traffic during the day this work will be done at night between 8pm and 5.30am. Please see the attached map for more details.

The sign will be removed from its existing location using a crane, loaded onto a truck and relocated, please refer to the map over for further details. The following equipment will be used:

- Crane
- Truck with elevated work platform
- Light vehicles
- Small tools
- Lights

You may experience increased noise levels as a result of this work. We will take measures to keep this to a minimum, including:

- Using non-tonal reversing alarms.
- Shrouding all stationery equipment where possible.

For more information about how we will manage noise, please refer to the *Hills M2 Upgrade Noise Management Fact Sheet* which is available on the project website [www.hillm2upgrade.com.au](http://www.hillm2upgrade.com.au)

**The community complaints and information line 1800 196 266** will be attended 24 hours per day, 7 days per week during construction. Complaints will be responded to within two hours and investigation of the complaint will proceed at the earliest opportunity.

If you have any questions or would like to provide feedback please contact us on the 1800 number or email [enquiries@hillsm2upgrade.com.au](mailto:enquiries@hillsm2upgrade.com.au).

Regards



Sanjin Muhic  
Hills M2 Upgrade Community Relations Manager



**Hills M2 Upgrade  
breakdown safety**

In the case of breakdown:

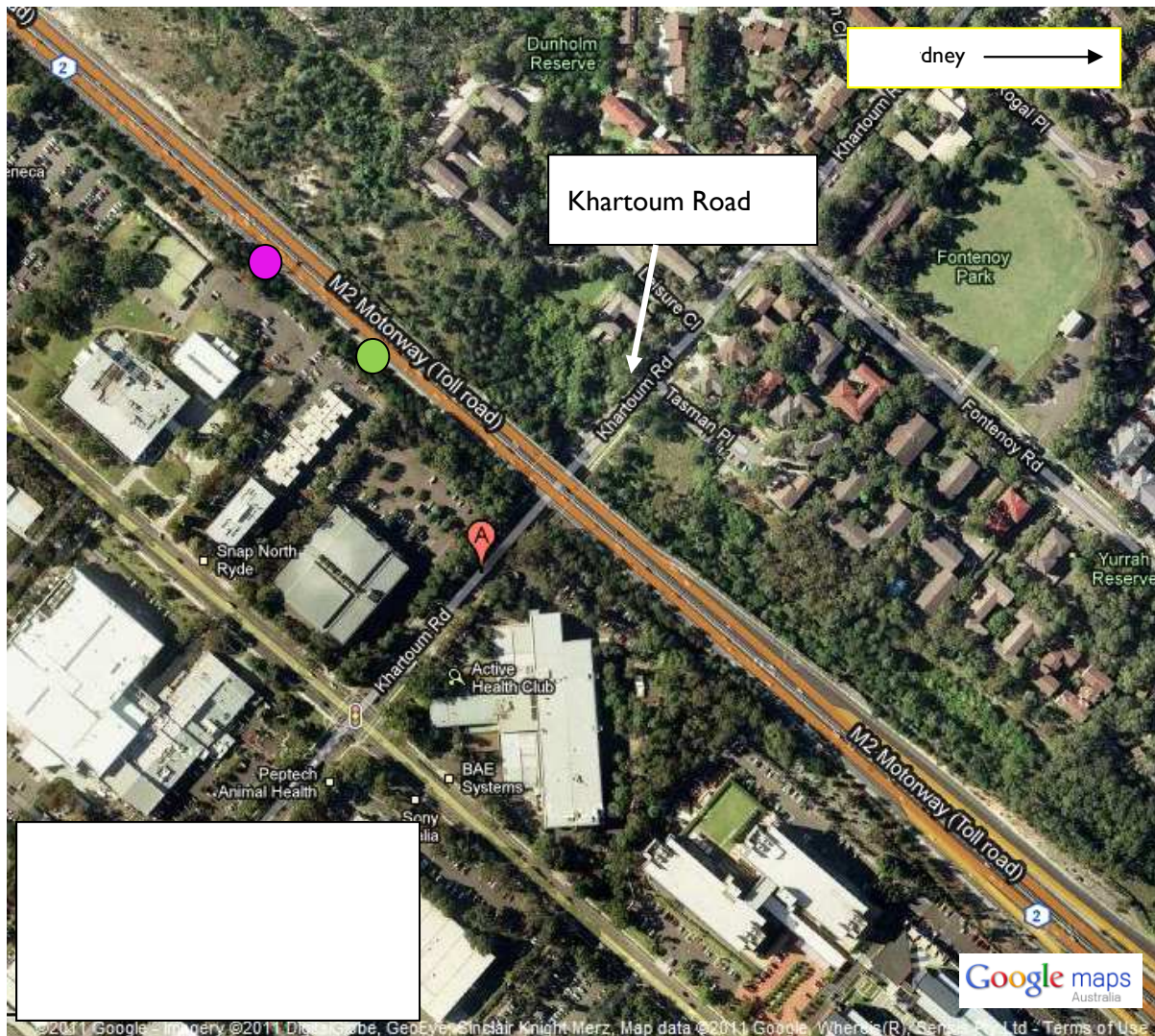
- Stay in your vehicle
- Switch on your hazard lights
- Call **1800 196 266**
- Wait for assistance

### Dates of night work: January 2012

January 2012						
S	M	T	W	T	F	S
1	2	3	4	5	6	7
8	9	10	11	12	13	14
15	16	17	18	19	20	21
22	23	24	25	26	27	28
29	30	31				

Dates of night work

Contingency date



#### Hills M2Upgrade

A team consisting of Roads and Maritime Services, The Hills Motorway Limited and Hills Motorway Management Limited (as trustee of the Hills Motorway Trust)

Go to: [www.hillsm2upgrade.com.au](http://www.hillsm2upgrade.com.au)

Live traffic: <http://www.livetraffic.com>

Email: [enquiries@hillsm2upgrade.com.au](mailto:enquiries@hillsm2upgrade.com.au)

Call: 1800 196 266 (select option 2)

Post: PO Box 379, North Ryde BC NSW 1670

If you need an interpreter, please call the Translating and Interpreting Service (TIS National) on **131 450** and ask them to telephone the M2 Upgrade project information line on 1800 196 266. Our business hours are 8.30am to 5.00pm Monday to Friday.

**Cantonese**

若你需要口譯員，請致電**131 450**聯絡翻譯和口譯服務署 (TIS National)，要求他們致電 1800 196 266 聯絡 M2 Upgrade project information line。我們的工作時間是 8.30am to 5.00pm Monday to Friday。

**Mandarin**

如果你需要口译员，请致电**131 450**联系翻译和口译服务署 (TIS National)，要求他们致电1800 196 266 联系 M2 Upgrade project information line。我们的工作时间是 8.30am to 5.00pm Monday to Friday。

**Korean**

통역사가 필요하시면 번역통역서비스 (TIS National)에 **131 450**으로 연락하여 이들에게 **1800 196 266** 번으로 M2 Upgrade project information line에 전화하도록 요청하십시오. 저희의 근무시간은 8.30am to 5.00pm Monday to Friday 입니다.

