

23 January 2012

Our Reference: N0305

Please note additional dates

Dear resident,

Re: Night work to strengthen the road pavement between Terrys Creek Bridge and Vimiera Road, Marsfield, commencing 30 January 2012

The Hills M2 Upgrade will widen the existing motorway between Windsor Road, Baulkham Hills and Lane Cove Road, North Ryde and will deliver four new ramps to improve access to the motorway. The project aims to provide efficient and integrated transport for the community of Sydney's North-West. Major work started in January 2011 and is expected to take approximately two years to complete.

As part of the motorway widening work, a process known as "cross stitching" will be undertaken to strengthen the existing road pavement on the motorway between Terrys Creek Bridge and Vimiera Road, Marsfield. This will involve drilling holes into the surface of the pavement and then reinforcing the holes with grout and steel.

This activity will be moving along the motorway in blocks of two nights in a row on the dates shown over the page. This work will be undertaken at night between 8pm and 5am when traffic volumes on the motorway are lower. Traffic will be diverted away from the work area under a contra flow arrangement.

Machinery and equipment used will include light vehicles, hammer drills, generators, industrial vacuum cleaner, lighting towers and hand tools. You may experience increased noise levels as a result of the work. The project team will take measures to keep this to a minimum, including:

- Complete drilling by midnight
- Using non-tonal reversing alarms, which make a "quacking" sound instead of a "beeping" sound.
- Shrouding all stationary equipment and using hoarding where possible.

For more information about how we will manage noise, please refer to the *Hills M2 Upgrade Noise Management Fact Sheet* which is available on the project website www.hillsm2upgrade.com.au.

The community complaints and information line 1800 196 266 (select option 2) will be attended 24 hours per day, 7 days per week during construction. Complaints will be responded to within two hours and investigation of the complaint will proceed at the earliest opportunity.

If you have any questions or would like to provide feedback please contact the project team on the 1800 number or email enquiries@hillsm2upgrade.com.au.

Regards



Sanjin Muhic
Hills M2 Upgrade Community Relations Manager



Dates of night work: January - March 2012

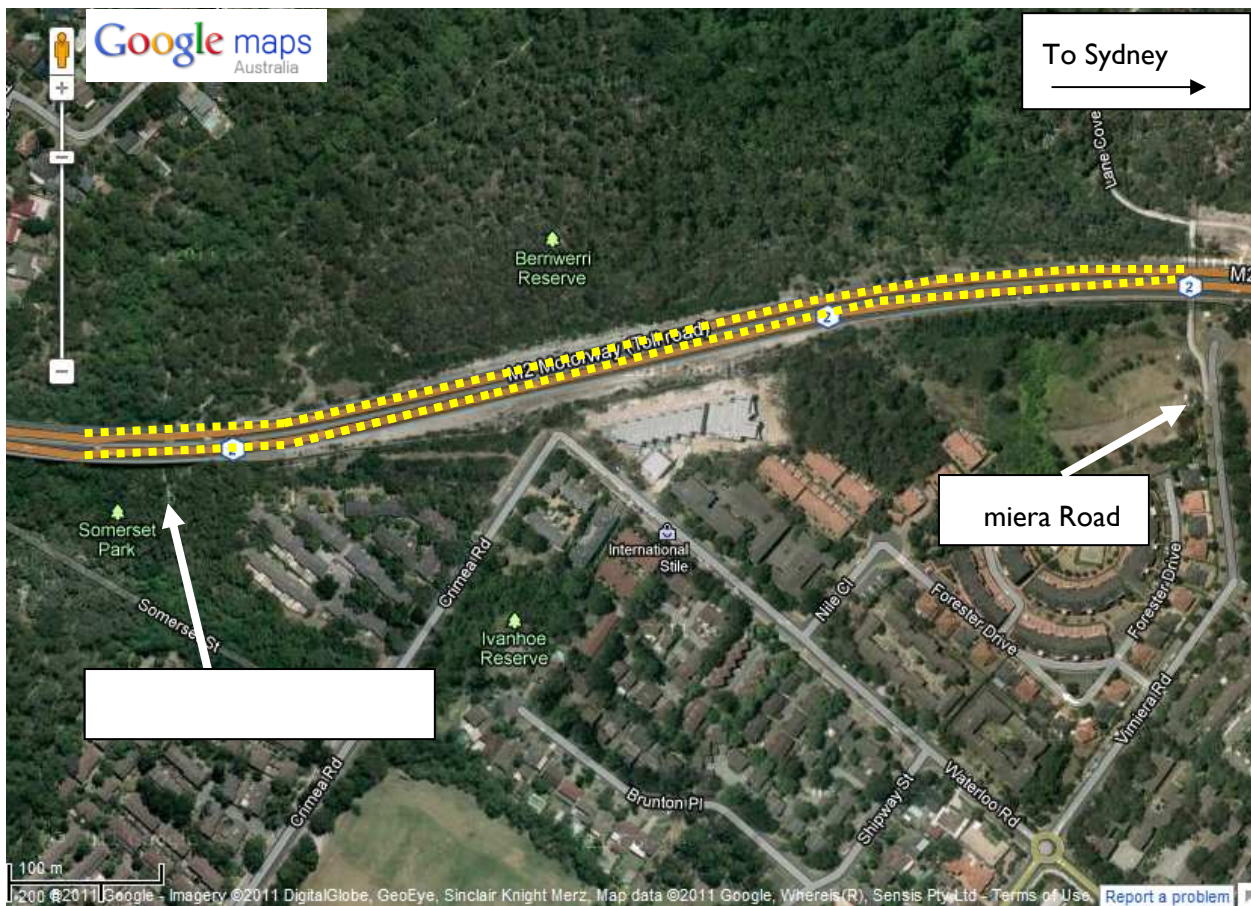
Dates of night work/work area 

Contingency dates 

January 2012						
S	M	T	W	T	F	S
1	2	3	4	5	6	7
8	9	10	11	12	13	14
15	16	17	18	19	20	21
22	23	24	25	26	27	28
29	30	31				

February 2012						
S	M	T	W	T	F	S
			1	2	3	4
5	6	7	8	9	10	11
12	13	14	15	16	17	18
19	20	21	22	23	24	25
26	27	28	29			

March 2012						
S	M	T	W	T	F	S
				1	2	3
4	5	6	7	8	9	10
11	12	13	14	15	16	17
18	19	20	21	22	23	24
25	26	27	28	29	30	31



Hills M2 Upgrade



If you need an interpreter, please call the Translating and Interpreting Service (TIS National) on **131 450** and ask them to telephone the M2 Upgrade project information line on 1800 196 266. Our business hours are 8.30am to 5.00pm Monday to Friday.

Cantonese

若你需要口譯員，請致電**131 450**聯絡翻譯和口譯服務署 (TIS National)，要求他們致電 1800 196 266 聯絡 M2 Upgrade project information line。我們的工作時間是 8.30am to 5.00pm Monday to Friday。

Mandarin

如果你需要口译员，请致电**131 450**联系翻译和口译服务署 (TIS National)，要求他们致电1800 196 266 联系 M2 Upgrade project information line。我们的工作时间是 8.30am to 5.00pm Monday to Friday。

Korean

통역사가 필요하시면 번역통역서비스 (TIS National)에 131 450으로 연락하여 이들에게 1800 196 266 번으로 M2 Upgrade project information line에 전화하도록 요청하십시오. 저희의 근무시간은 8.30am to 5.00pm Monday to Friday 입니다.



Hills M2 Upgrade

A team consisting of Roads and Maritime Services, The Hills Motorway Limited and Hills Motorway Management Limited (as trustee of the Hills Motorway Trust)

Go to: www.hillsm2upgrade.com.au

Live traffic: <http://www.livetraffic.com>

Email: enquiries@hillsm2upgrade.com.au

Call: 1800 196 266 (select option 2)

Post: PO Box 379, North Ryde BC NSW 1670

Hills M2 Upgrade



Hills M2 Upgrade

A team consisting of Roads and Maritime Services, The Hills Motorway Limited and Hills Motorway Management Limited (as trustee of the Hills Motorway Trust)

Go to: www.hillsm2upgrade.com.au

Live traffic: <http://www.livetraffic.com>

Email: enquiries@hillsm2upgrade.com.au

Call: 1800 196 266 (select option 2)

Post: PO Box 379, North Ryde BC NSW 1670
